

WEST LRT NEWSLETTER

The City of Calgary's West LRT progress report

13 Ave SW

14 Ave SW

DEC. 2010

In this issue: Construction "on track" | Website | Moving forward | Project Highlights 2010 | What's in store for 2011?
Noise and night work | Sarcee Trail interchange | Traction power stations

Construction "on track"

Calgarians travelling through Calgary's west side are no strangers to road construction. This construction season started with some major impacts on Bow Trail and then quickly spread to 17 Avenue S.W. between 37 Street and 73 Street. In the past eight months, crews relocated utility lines, moved roads, and began construction on the six LRT stations.

"The patience and support commuters, residents and businesses showed this past year has been a big part of the project's success," says project director Darrell Norton. With the construction zone now spanning eight kilometres, it may seem like work will never end, but improvements to roads and access will be evident through late 2010 and early 2011.

Worker constructing one of the 37 piers for the elevated LRT guideway



Elevated LRT guideway trailing the launching truss



To keep current on the project and its progress, please visit westlrt.ca.

Website

westlrt.ca is still the best way to find all you need to know about the West LRT project. Here are some of the more popular web pages visitors are looking up:

- Construction and Traffic Map
- What's New
- Construction News
- Route Animation
- Timeline

You can also sign up to receive Traffic Alerts at westlrt.ca through your email that includes timely information on traffic disruptions and construction activity.

Moving forward

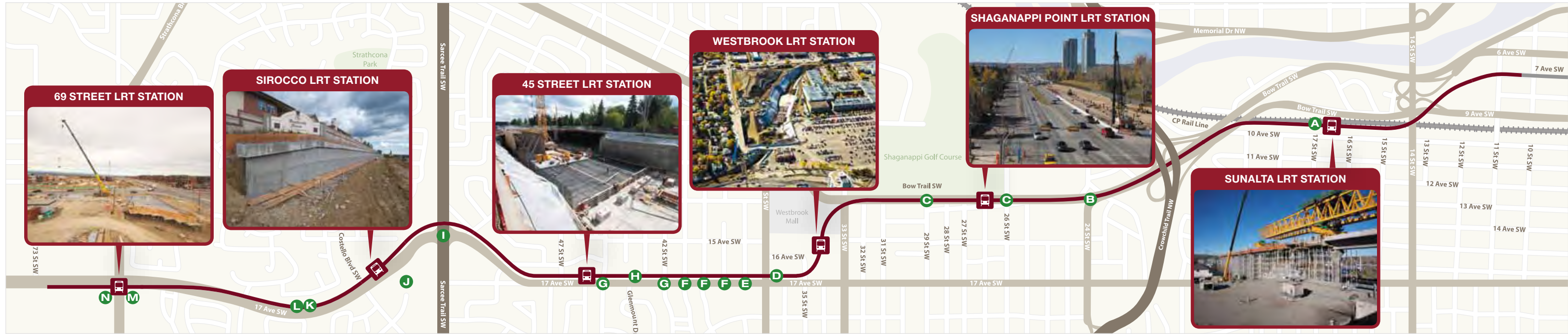
In 2010, work primarily focused on making room for the LRT line. It will continue at a fast and efficient pace over the next two years, but daily disruptions will begin to taper off. In late 2010 and early 2011, crews will open roads, restore left hand turn bays and widen lanes.

The 2011 construction season will focus work within the LRT right of way, which includes constructing LRT stations, track and the electrical systems that will provide power to the LRT line. Work will also continue on the Sarcee Trail/17 Avenue interchange.

For regular West LRT project updates, sign up for the e-newsletter at westlrt.ca.

For updates on traffic impacts due to construction, sign up for Traffic Alert emails at westlrt.ca.

West LRT Alignment



Project Highlights 2010 (from east to west)

- A Elevated Guideway:** Guideway structure on schedule to be complete in early 2011.
- B Westbound Bow Trail:** Permanently realigned between 24 Street S.W. and 37 Street S.W.
- C Permanent closures on Bow Trail:** 29 Street S.W. and 12 Avenue S.W. access.
- D LRT tunnel (Westbrook to 38 Street S.W.):** Back filling underway.
- E 38 Street S.W. access to 17 Avenue:** Opened.
- F Permanent closures on 17 Avenue S.W.:** 39 Street S.W., 40 Street S.W. and 41 Street S.W.
- G 42 Street S.W. and 45 Street S.W. bridges:** Opened to traffic.
- H LRT trench (38 Street to 45 Street S.W.):** Excavation and concrete work underway.
- I Sarcee Trail Interchange:** Detour road open, bridges under construction.
- J Sirocco Park and Ride:** Opened.
- K LRT alignment:** Retaining wall work underway.
- L 17 Avenue S.W.:** Permanently realigned between Costello Boulevard and Christie Park Gate.
- M 69 Street bridge:** Completed east half of bridge over LRT station.
- N 69 Street S.W. Parkade:** Constructing structure and architectural features.

Workers constructing the LRT tunnel at 38 Street S.W. ▼



Workers pouring the Sunalta Station deck ▼



Constructing the tunnel under 17 Avenue S.W. to the 69 Street Station ▼



Utility Fact #1

TELUS relocated more than 23 kilometres of its infrastructure for the West LRT project including fibre optic and copper cables. That's three times longer than the West LRT alignment.

WEST LRT NEWSLETTER

The City of Calgary's West LRT progress report

For more information on the West LRT, visit westlrt.ca.

For regular West LRT project updates, sign up for the e-newsletter at westlrt.ca.

What's in store for 2011?

With construction transitioning from road work to building the LRT line and stations, construction will become confined to the LRT right of way and station areas. Here are some construction milestones in 2011 that will make your commute easier:

- Open 33 Street S.W. access at Bow Trail in early 2011.
- Open left hand turn lanes at the 37 Street S.W. and 17 Avenue S.W. intersection in spring 2011.
- Open 35 Street S.W. access at 17 Avenue S.W. in spring 2011.
- Complete Costello Boulevard and Christie Park Gate intersections in spring 2011.
- Open all through and turning lanes at the 17 Avenue and 69 Street S.W. intersection in spring 2011.
- Open 24 Street S.W. pedestrian bridge in summer 2011.
- Open all six Bow Trail traffic lanes (three eastbound/ three westbound) from Crowchild Trail to 37 Street S.W. in fall 2011.

Utility Fact #2

The total length of underground storm, water and sanitary utilities relocated for the West LRT Project equals the height of Mount Everest.

Noise and night work

The City does keep night work to a minimum and only allows it when the nature of the work requires it. If work is being considered outside regular working hours, The City tries to minimize noise impacts by considering idling times, hauling routes and back-up alarms on equipment.

Expect night work to begin at all six LRT stations in 2011. Night work is highlighted within the Traffic Alerts. Register your email address at westlrt.ca to receive Traffic Alerts.

Sarcee Trail/17 Avenue S.W. interchange

The 17 Avenue S.W. detour road is in place and operating smoothly. Grading and pier construction began for the Sarcee Trail/17 Avenue S.W. interchange in fall 2010. In 2011, crews will complete the bridge piers, girders will be in place and construction on the deck will begin.

Southbound Sarcee Trail will shift to the west in 2011, with grading and paving of the new roadways continuing through the year. Expect Sarcee Trail to be "free flow" (no traffic lights) in early 2012, with the interchange completed in late 2012.



Sarcee Trail/17 Avenue interchange – bridge pier construction

Traction power stations

Traction power stations are the power source for the LRT line that enables the trains to operate and safely carry passengers. There are nine power stations located along the alignment from Shaw Millennium Park to 69 Street S.W. While some of these stations are underground, there are a few at ground level. GEC Architecture designed the stations to incorporate some of the design themes of the West LRT line, such as sandstone and prairie grass.

You can see a completed traction power station with its final look on the corner of Christie Park Gate and 17 Avenue S.W.



Architectural representation