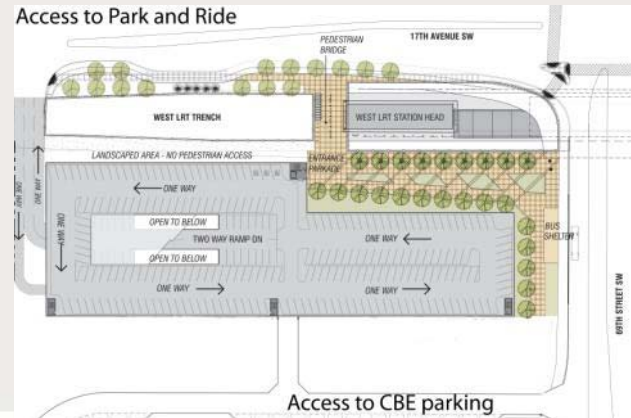


69 Street Station Parkade function and design highlights

Parkade function

The functional parameters call for a multi level parkade shared by Calgary Board of Education administration at the West Calgary High School (CBE) and Calgary Transit Park and Ride users. The CBE will begin using the first floor of the parkade in 2011. The remaining three floors will open to Calgary Transit patrons once the West LRT opens for revenue service.

- Accommodates approximately 1,000 parking stalls; CBE (250) and Calgary Transit (750)
- Access for CBE administration is from southbound 69 Street S.W.
- Access for Calgary Transit patrons is from 17 Avenue S.W., which will be managed by a traffic signal on 17 Avenue S.W. just west of 69 Street S.W.
- An electronic sign on 17 Avenue S.W. will advertise the remaining number of stalls available in the Park and Ride

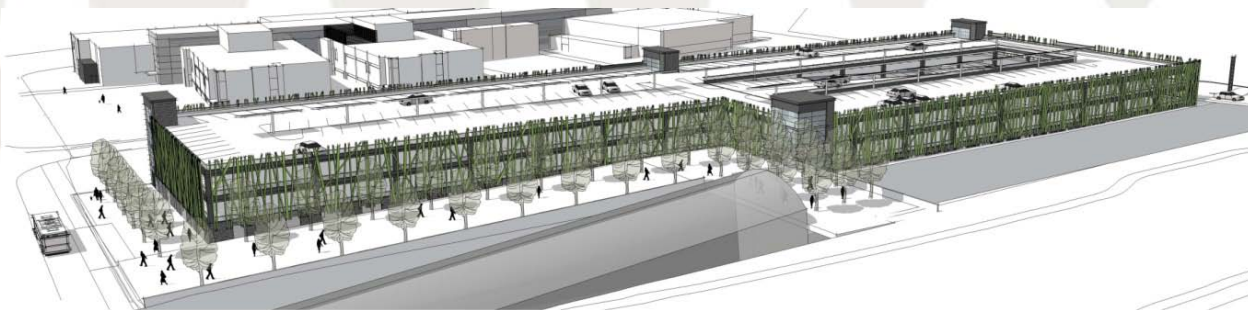


The parkade's site plan showing the park and ride access from 17 Avenue S.W. and the CBE access from 69 Street S.W.

Parkade design and architectural features

A design goal was to balance the parkade's functional requirements with the surrounding structures in the community. The 69 Street Station Parkade features the following design elements:

- The size and mass is a comparable to the educational buildings, multi-family housing, and recreation centre in the area
- The building has a subtle "L" shape giving it a more active appearance than a rectangle shape
- Stairwells are glassed in and framed with rundle-stone coloured masonry
- A landscaped plaza near the 17 Avenue/69 Street S.W. intersection features green space, trees and a regional pathway for pedestrians and cyclists
- Internally, natural light floods the parkade floors from the light well that opens up the middle of the building's west end, which enhances safety and security with clear sight lines and quality lighting



An architectural rendering showing a preliminary design of the parkade

The architectural firm designed an esthetic feature to cover the external parkade walls conceptually based on prairie grass, which can also be seen on a number of the West LRT structures and in the LRT alignment safety fence design:

- 550 curved and straight multi-shaded green, steel blades will be mounted on all sides of the parkade
- The steel blades will be randomly lit at night with low level LED lights

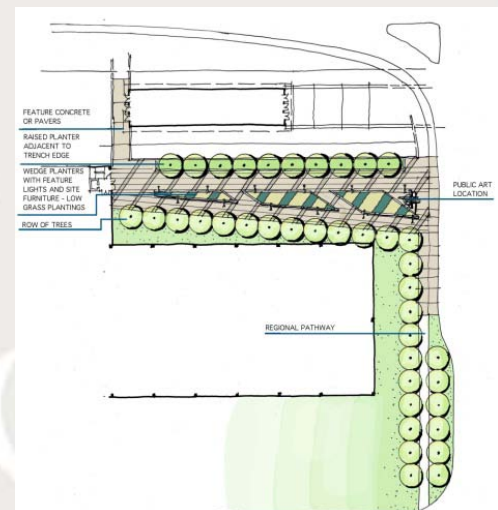


The final facade design with stairwell and plaza in the northeast corner

Public Engagement

The public engagement process began in January 2009 with representation from the surrounding communities of Strathcona/Christie Park/Aspen Woods, Signal Hill and Springbank Hill. This process resulted in a number of design and operational changes:

- Lowered the parkade elevation so the four-story building remains only two stories higher than 17 Avenue S.W.
- Added 250 parking stalls
- Changed way finding from a two-way traffic flow to a one-way traffic flow
- Altered the access/egress at 17 Avenue S.W. to improve accessibility
- Improved the design by adding curved blades to the original straight blades on the external building walls
- Consulted on shades of green for the steel blades to soften the visual appearance
- Modified the stairwell design to articulate and soften the overall appearance
- Influenced the plaza landscaping design, including the pedestrian walkway and diagonal landscaping planters



The final design of the northeast plaza

History

- January 2009** Public engagement process begins
- February 2009** Parkade detailed design begins
- January 2010** Council approved the 69 Street Station Parkade design
- April 2010** Parkade construction begins